

Report to Community Safety Forum – 25th February 2013

Subject: Crime trends and performance in Brighton & Hove, Position up to January 2013

Contact Officer: Name: *Ruth Condon* Tel: 29-1103

E-mail: ruth.condon@brighton-hove.gov.uk

Wards Affected: All

1. SUMMARY AND POLICY CONTEXT:

- 1.1 This report describes recent activities and progress relating to priority areas in the [Brighton & Hove Community Safety, Crime Reduction and Drugs Strategy 2011-14](#). It also provides statistical updates relating to the first ten months of 2012/13, ie. April to January 2013.
- 1.2 Graphs showing monthly crime data from April 2008 to January 2013 are also provided. These set recent data in the context of both longer term trends and also seasonal crime cycles (where applicable).

2. RECOMMENDATIONS:

- (1) The Community Safety Forum notes the information provided in this report and is invited to:
 - i) Feedback on any developments from their community or organisation's experience which may help the understanding and interpretation of the data and trends contained in this report.
 - ii) Consider the potential for supporting crime reduction and community safety priorities within their own organisation or local community.

3. INFORMATION:

Total police recorded crime

- 3.1 Total crimes recorded by the police declined year on year between 2004/5 and 2011/12. However, in the current year this decline has levelled out. Between April 2012 and January 2013 there were a total of 19,985 police recorded crimes, 130 crimes more than in the same months of 2011/12 (0.6% increase). Theft and handling offences have increased by 5% so far this year and this is influencing the trend in total crimes since they have made 49% of total crime in 2012/13 to date. However, this is an improved position compared with the position three months ago when theft and handling was showing a 9.5% increase and total crimes were up by 2.4%.

Neighbourhoods and quality of life

- 3.2 In the first ten months of 2012/13 (Apr to Jan) the long term downward trend in criminal damage recorded by the police has continued, being 15% lower than in the same months of 2011/12. Street appearance surveys of levels of litter, graffiti and flyposting continue to be carried out by Cityclean and levels remain within target, although there are signs from these surveys and from Sussex Police telephone surveys of public perception that levels of litter may be increasing. Levels of cleanliness across the city have been recognised by the award of 4 Stars in the Large Population Category 2012 of the Clean Britain Awards which are run by the British Cleaning Council and the Chartered Institution of Waste Management. The Hove Business Partnership has recognised the work done by the Cleansing Team in Hove by awarding them a Hove Heroes award for 2012.
- 3.3 The new Safe in the City website is now live (www.safeinthecity.info) and focused on providing residents with information they need (getting help section) and with providing opportunities for them to help improve safety in the city (getting involved section). It also holds key documents for the partnership, such as the current version of the Community Safety, Crime Reduction and Drugs Strategy.
- 3.4 To obtain a wider reach into the community, open up the work of the Safe in the City Partnership to new audiences and strengthen our communication network, the Projects Team (Environment Improvement Team) began using the Twitter micro blogging social media site at an early stage. Twitter has enabled us to interact with a substantial network of the wider community of Brighton & Hove, and also within professional networks and partnership organisations. The Safe in the City twitter account now has over 1,000 'followers' including local and national politicians, professional organisations, local and national media, the voluntary and business community in Brighton & Hove and city residents. Interactions on this network continue to increase.

Drugs Misuse

- 3.5 In November 2012, national data for drug related deaths that occurred during 2010 were published. The Brighton & Hove rate of 14.8 deaths per 100,000 population remained the highest in the UK, but the total of 32 deaths represented a 35% reduction on the previous year, when there were 50 reported deaths. Interim local data indicate that numbers have subsequently dropped with 21 deaths occurring between Jan and Sep 2012.
- 3.6 In May 2012 the Independent Drugs Commission was set up locally to examine the harm caused by drugs in Brighton & Hove. Draft findings and recommendations are open for consultation during the month of February 2013 and a copy of the report is available at <http://www.safeinthecity.info/independent-drugs-commission>. Questions addressed fall into four themes:
- Are the current strategies to prevent drug related deaths sufficient to achieve a significant reduction in the coming years?
 - Are the policing, prosecution and sentencing strategies currently pursued, effective in reducing drug related harm?

- Are we doing enough to protect young people and to enable them to make informed decisions around drug use and involvement in drug markets?
- To what extent does the treatment system meet the treatment and recovery needs of the citizens of Brighton & Hove?

3.7 Following the UK Recovery Walk in Brighton & Hove in September 2012, a grant has been given to Impetus, a local charity to provide support to Cascade Creative Recovery. This is set up by local people in recovery, to work towards creating a permanent facility based on fund-raising and peer support.

Reducing Offending

3.8 There is an increase in all acquisitive crimes (incl. theft/handling, burglary and robbery) of 6% in the first ten months of 2012/13 compared with the same months of 2011/12. However, the position is showing a clear improvement over the last three months with numbers over this period at about the same level as they were a year ago. This improvement is on account of the recent drop of theft and handling offences mentioned in para. 3.1 above. While the vehicle crime trend continues to drop, there is a current problem with domestic burglaries. The number of domestic burglaries was particularly low during the autumn months of 2011, but have climbed consistently over the last twelve months; in the first ten months of 2012/13 they are showing a 43% rise compared with the same months in 2011/12.

3.9 Brighton and Hove Police have instigated some changes in order to address the domestic burglary problem. These have included removing officers from other duties to patrol 'hot-spots' identified by our analysts, plain-clothes operations targeting burglary suspects/affected areas and uniform officers cold-calling home addresses of those suspected of being involved. This operation has so far lead to numerous arrests and the recovery of property from several burglaries. Many of those arrested have been remanded in prison by the courts and though it is early days there are signs of a reduction in the number of burglaries. The police are intending to encapsulate some of the changes into their normal policing of Brighton and Hove.

3.10 Partnership work aimed at stopping reoffending and tackling the underlying reasons behind offending is ongoing. Additional funding has been secured to help different partner agencies to identify and assess the health needs of offenders and to direct them to treatment. Other planned work includes involvement of volunteer peers mentors engaging with offenders to help them rebuild their lives and reconnect with services and people in their local community.

Alcohol Misuse and Alcohol-related Disorder

3.11 Alcohol-related hospital admissions were on an upwards trend from the beginning of 2010 until October 2011, but this trend appears to have reversed over the last few months, with numbers recorded between April and October 2012 being 7% lower than in the same months of 2011.

3.12 The number of injury violence crimes climbed up from a low point in February 2012 and continued on a rising trend until September (peaking later in the year than in previous years) although it has dropped again since then. In the first ten months of 2012/13 there has been an increase of 2.5% in injury violence crimes compared with the same months in 2011/12, and against a 3% reduction target.

- 3.13 To encourage a move away from 'traditional' drinking patterns, work has been taken forward in conjunction with the council Arts Team to continue to develop alternative events throughout the year which help to encourage responsible drinking and promote the city as a focus for cultural activity. Examples include expanding the Pink Fringe, and exploring the creation of an extended programme of specific alcohol free events for young people.
- 3.14 Work is underway to develop a network of designated best practice retailers who commit to specific measures such as better proxy purchase detection, limited alcohol promotion and better information for consumers (eg. units of alcohol and associated calories purchased).
- 3.15 The local Alcohol Programme Board has responded to the government consultation on the National Alcohol Strategy. Aspects being proposed which are supported by the Board include: setting a minimum unit price for alcohol sales and restrictions on multi-buy offers at supermarkets, reducing outlet concentrations in city centres, and the addition of a health objective in licensing policy.

Anti-Social Behaviour

- 3.16 Between Oct 2011 and Sep 2012 21% of the 1,558 people surveyed believed that one or more of 6 types of anti-social behaviour (drug dealing/use; drunk/rowdy behaviour; vandalism/graffiti; litter/dog fouling; noisy neighbours; and teenagers hanging around) was a fairly big or very big problem. This compares with 18% in the 12 months ending June 2012.
- 3.17 The dedicated anti-social behaviour and hate incident reporting system in place since May 2012 enables calls to be taken via the duty line (292735) or by email during 'working hours'. There have been 386 enquiries taken between May and the end of December, of which 248 were related to anti-social behaviour incidents and 82 to hate incidents. Of these enquiries 73 became cases for the Community Safety Casework Team.
- 3.18 There is action being taken to address the behaviour of current youth disorder groups with dedicated officers in the police and Casework Team focussing on the behaviour of the most prolific youth ASB offenders. ASBOs or other enforcement action are being taken forward as necessary to dissipate the group and reduce their ASB and impact on communities and individuals.
- 3.19 The Community Trigger trial being undertaken in the city has officially ended during which period there were nine activations. Learning from the trial is feeding into the new ASB Act in the form of the ASB review process. This will be overseen by Police and Crime Commissioners.

Children, Young People and Families

- 3.20 The number of young people aged 10-17 entering the criminal justice system continues to decrease (59 between April and December 2012, 9% fewer compared with the same period in 2011). However, the most recently available data (in the 12 months ending Mar 2011) show that there is more re-offending by young offenders in Brighton & Hove compared with most other local authority areas. The Youth Offending Service is reviewing its structure and action plan with a view to improving

outcomes for young offenders and there will be particular focus on multi-agency work to tackle reoffending.

- 3.21 Work is being taken forward to increase opportunities for young people to have things to do in their leisure time and to build drug and alcohol awareness as part of curriculum delivery within community and voluntary sector youth services. The council's youth services are enhancing their role in helping to build resilience among young people. Links between RU-OK? (the young people's substance misuse service) and the families of the young people in their service are being strengthened and this is beginning to show an increase in family/carer involvement.

Domestic Violence

- 3.22 Between April 2012 and Jan 2013 there have been 2,893 domestic violence crimes and incidents recorded on the police crime database, 83 (3%) more than in the same months of 2011/12. If this increase represents more people coming forward to report incidents of domestic violence, this is a positive result.
- 3.23 In the first nine months of 2012/13 the police solved 47% of domestic violence crimes. In this same period 66% of finalised court cases resulted in a positive outcome (mostly a conviction). Although this is an improvement on the position earlier in the year and on a par with the level achieved in 2010/11, it is lower than the 78% achieved in 2011/12. A meeting of agencies concerned is taking place to help understand any reasons behind unsuccessful outcomes and to agree any appropriate actions to improve DV court outcomes.
- 3.24 A Violence against Women and Girls Commissioner has been appointed and came into post in February 2013. A key task of this new role will be to integrate strategic and operational responses to domestic violence, along with sexual violence (see para 3.27 below), into the 'Preventing Violence against Women and Girls' strategy 2012-2017 by developing an action plan. This will include looking at how domestic violence services are commissioned across the city.
- 3.25 Supported by CAADA (Coordinated Action Against Domestic Abuse), the Multi-Agency Risk Assessment Conference (MARAC) is currently being reviewed. This will enable the partnership to build on existing work to further improve responses to high risk victims of domestic abuse.

Sexual Offences

- 3.26 The number of police recorded serious sexual offences in the first ten months of 2012/13 was 244, and this compares with 233 recorded in the same months in 2011/12. This increase of 4.7% contrasts with the position in the last report when a decrease was noted. In particular, the last three months has shown a notable increase compared with months earlier in the year. This coincides with the release of the publicity around abuse by Jimmy Savile which may have increased people's confidence to report incidents. In the first nine months of 2012/13 59 (89%) of the 66 sexual offences which have reached the court stage have resulted in a successful outcome.
- 3.27 The newly appointed Violence against Women and Girls Commissioner will be integrating the existing strategic and operational responses to sexual violence, abuse and exploitation, and trafficking into the 'Preventing Violence against Women and

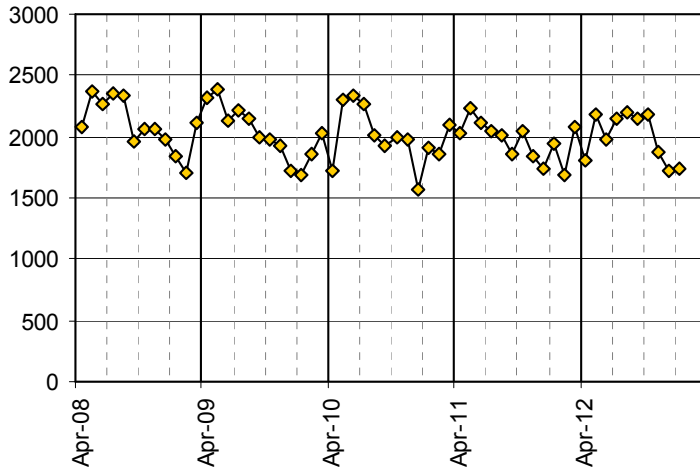
Girls' strategy 2012-2017 by developing an action plan in the near future. The partnership is reviewing how best to provide specialist support to victims of sexual violence through an ISVA (Independent Sexual Violence Advisor) service. The intention is to commission a new service providing support of female and male victims of sexual violence from the 1st April 2013. A meeting of agencies concerned with the operation of the Sussex SARC (Sexual Assault Referral Centre), has been agreed to review the referral pathways for victims and ensure that they have access to consistent, joined up services based on need.

Hate Incidents and Crimes

- 3.28 The police recorded 130 **racist and religiously motivated incidents and crimes** in the first nine months of 2012/13 on their crime database, 19% more than in the same period in 2011/12. The police made charges for 52 racist or religiously motivated crimes over this period. 82% of prosecutions at court resulted in successful outcome (mostly a conviction) in the first nine months of 2012/13 (49 out of 60 finalised prosecutions), dropping back from the level of 89% achieved during 2011/12.
- 3.29 Work with BME school pupils and parents/carers has begun in one of two pilot schools to increase reporting and improve responses by schools. Work is also moving forward with one of the NHS Trusts to improve monitoring and information sharing and to build joint working. Work with the other three NHS Trusts will also continue.
- 3.30 In the first nine months of 2012/13 there have been 61 **LGBT hate incidents and crimes** recorded by the police, compared with 45 in the same months in 2011/12. In the first nine months the police solved 23 crimes with 13 of these resulting in a charge. 18 out of 21 prosecutions finalised at court had a successful outcome.
- 3.31 A Trans Equality Scrutiny report has been published and work is being taken forward in consultation with Trans communities to look at development work around the report's recommendations. Representatives of the Trans community are being consulted on how to develop a better response to hate crime reporting as part of a pan-Sussex workshop on hate crime being led by Sussex Police.
- 3.32 The police have recorded 11 **disability hate crimes** and no crime-related incidents on the crime database in the first nine months of 2012/13; this compares with three recorded in the same months of 2011/12. There has been one finalised case at court and this had a successful outcome. The type of impairment for victims reporting to the Community Safety Casework Team is most frequently learning disability and the next most frequent type is physical/sensory disability.
- 3.33 Outreach work with disabled people and the organisations which support them continues by the Casework Team, police Hate Crime Coordinator and the Disability Liaison Officers. An example is the 'Best Of Health Day' event which was attended by 120 people with learning disabilities, their families and carers where some of them accessed information about reporting of hate incidents and support available in the city.

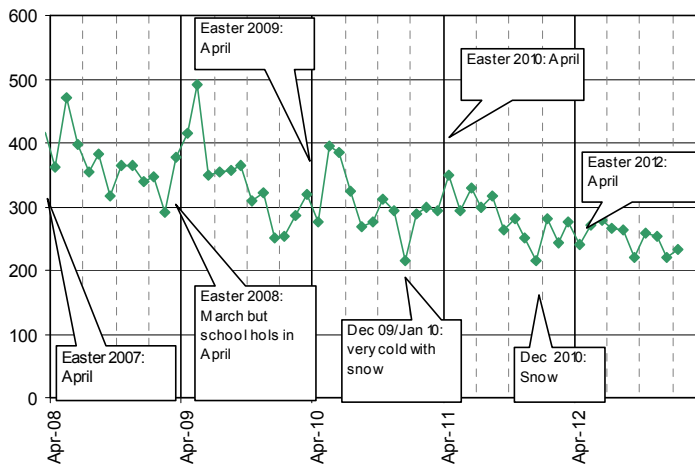
Crime trends up to January 2013 (monthly data)

Total Crimes, Apr 2008 to Jan 2013



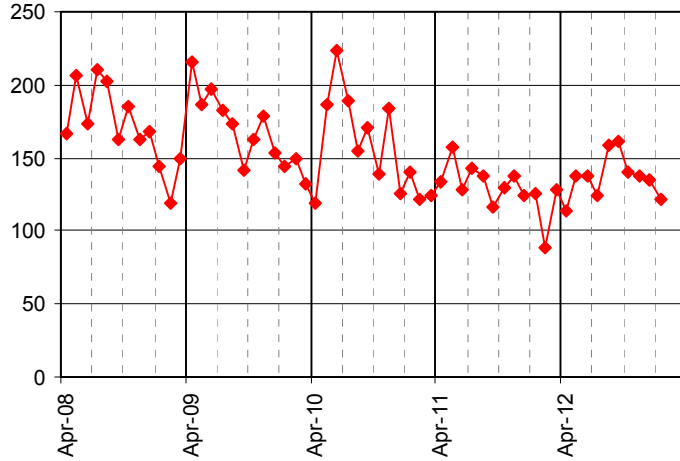
3.34 Total crimes have shown a year on year decline up to the end of 2011/12. The seasonal decline which is usually seen during late summer was not evident this year, but the most recent three months have shown a more typical seasonal drop.

Criminal Damage, April 2008 to Jan 2013



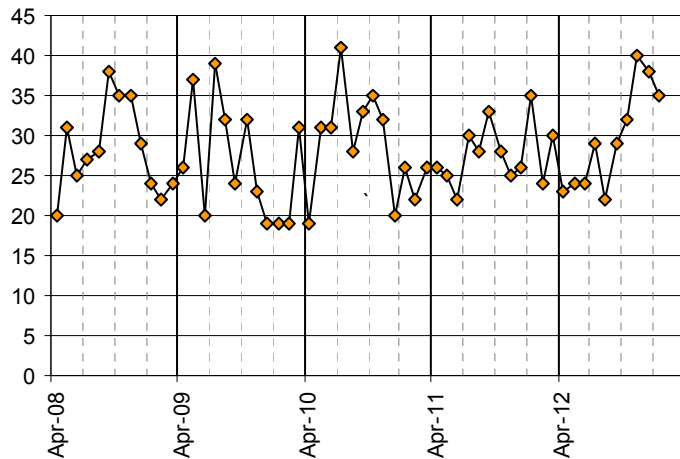
3.35 The long term downward trend in criminal damage continues.

All Injury Violence
Apr 2008 to Jan 2013



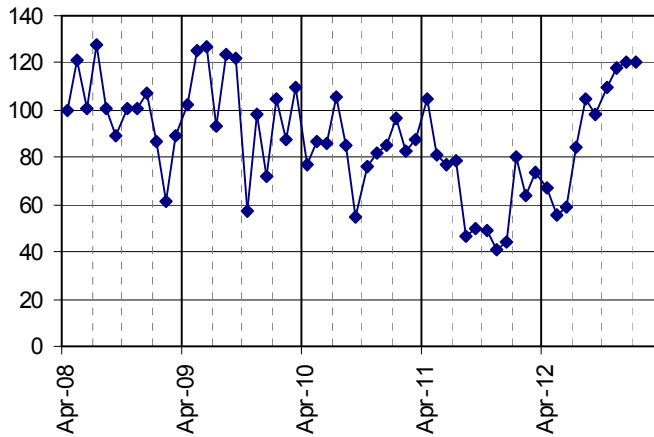
3.36 The number of injury violence crimes climbed up from a low point in February and continued on a rising trend until September (peaking later in the year than in previous years) and has dropped again since then.

Sexual Offences Apr 2008 - Jan 2013



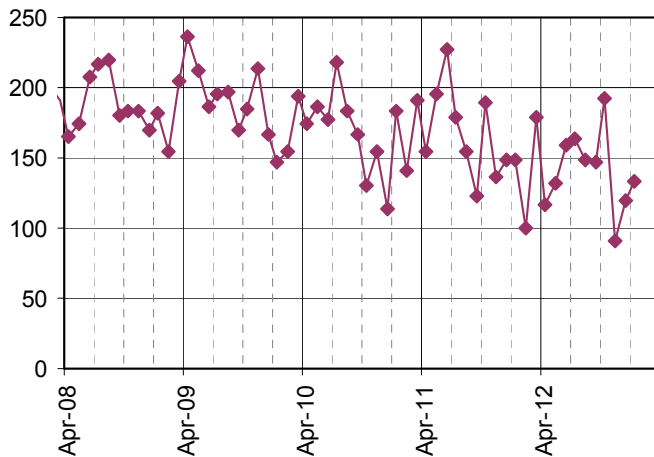
3.37 The number of police recorded sexual offences in the last three months has shown a notable increase compared with months earlier in the year.

Domestic Burglary, Apr 2008 to Jan 2013



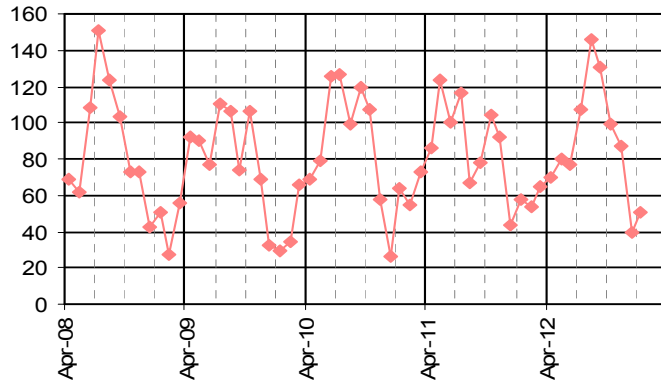
3.38 There was a long term declining trend in domestic burglaries, with numbers between August and December 2011 being particularly low. From May 2013 onwards numbers have risen steadily and levels in the most recent three months are on par with those seen at points three or four years ago.

Vehicle Crime, Apr 2008 to Jan 2013



3.39 Vehicle crimes have fluctuated over the past year, but the general trend is downwards. 91 crimes were recorded in Nov 2012, the lowest monthly number recorded for many years.

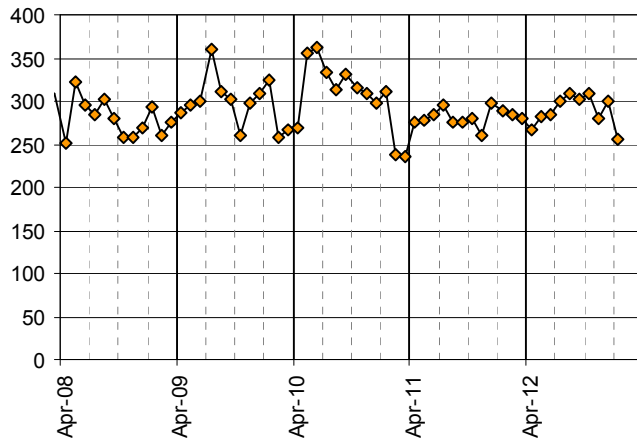
Theft of a Pedal Cycle,
Apr 2008 to Jan 2013



3.40 A strong seasonal pattern in cycle thefts continues and is linked to those months when more people tend to cycle.

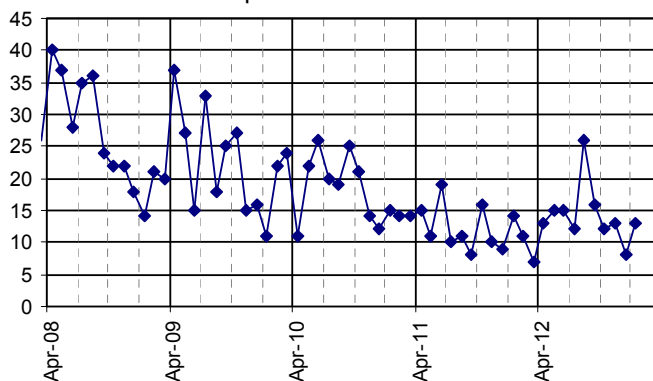
Police crime data presented in this report only reflect those crimes which are reported and recorded. There is likely to be a level of underreporting in many crime types. However, domestic violence and the hate crimes on this page may be particularly liable to underreporting.

Domestic Violence Crimes and Incidents
Apr 2008 - Jan 2013



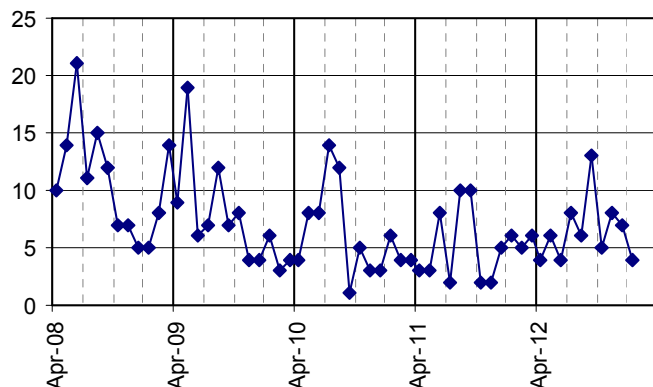
3.41 The number of domestic violence crimes and crime-related incidents recorded during 2011/12 has been between 250 and 300 each month. Monthly numbers have mostly remained within this range during the first 10 months of 2012/13.

Racist and Religiously Motivated Crimes and Incidents (police crime database),
Apr 2008 to Jan 2013



3.42 The long term declining trend in police recorded racist and religiously motivated incidents and crimes was stabilising at around 10 – 15 incidents per month during 2011/12. The month of August showed a spike up to 26 incidents (as discussed at the last CSF meeting), but the following five months reverted to a more typical level.

Homo/bi/transphobic crimes and crime-related Incidents (police crime database),
Apr 2008 to Jan 2013



3.43 The number of police-recorded homophobic, biphobic or transphobic crimes and crime-related incidents has been at ten or below since summer 2010, with the exception of the month of September when 13 were recorded.

Performance data for key crime types, position at end January 2013

	number of crimes Apr 11-Jan 12	number of crimes Apr 12-Jan 13	rank within 15 bench-marked CSPs ¹
Police recorded crimes			
Total Crimes	19866	19985	7
Criminal Damage	2874	2503	13
Injury Violence	1335	1368	5
Sexual Offences	278	296	n/a ²
Domestic Burglary	635	937	5
Theft from/of a Motor Vehicle	1655	1401	3
Theft and handling (excl. motor vehicle theft)	9285	9749	10
Pedal Cycle Theft	869	888	7
Police recorded crimes and crime-related incidents			
Domestic Violence Crimes and Incidents	2810	2893	n/a
Racist/Religiously motivated Crimes and Incidents	123	143	n/a
LGBT Hate Crimes and Incidents	51	65	n/a

¹ Brighton & Hove is matched for comparative purposes with 14 other Community Safety Partnerships (CSPs) according to a range of socio-demographic and geographic variables. A rank of 1 is the best; 15 is the worst; 8 is the middle position.

² Because sexual offences, DV and hate crimes are subject to underreporting and local work is being undertaken to increase reporting of these crimes, it is not appropriate to judge performance in comparison with other Community Safety Partnerships based on the number of police recorded crimes.

COMMUNITY SAFETY FORUM

Agenda Item 43a

Brighton & Hove City Council

Disability Hate Crimes and Incidents	4	11	n/a
--------------------------------------	---	----	-----